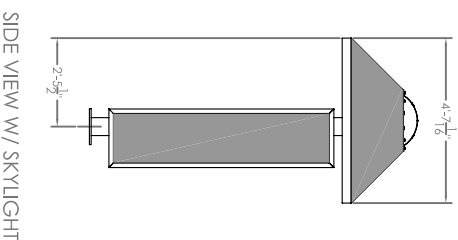
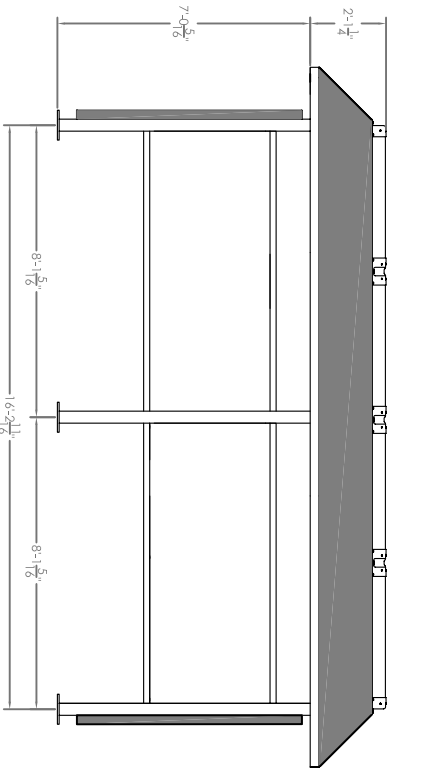
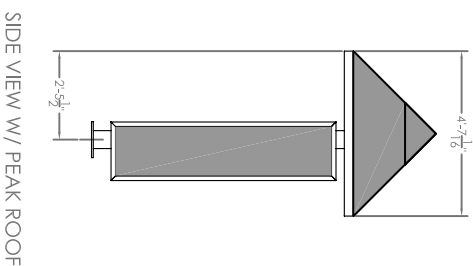
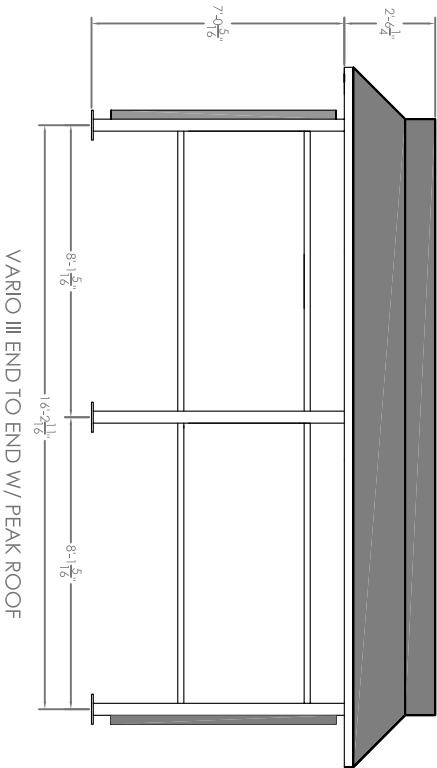
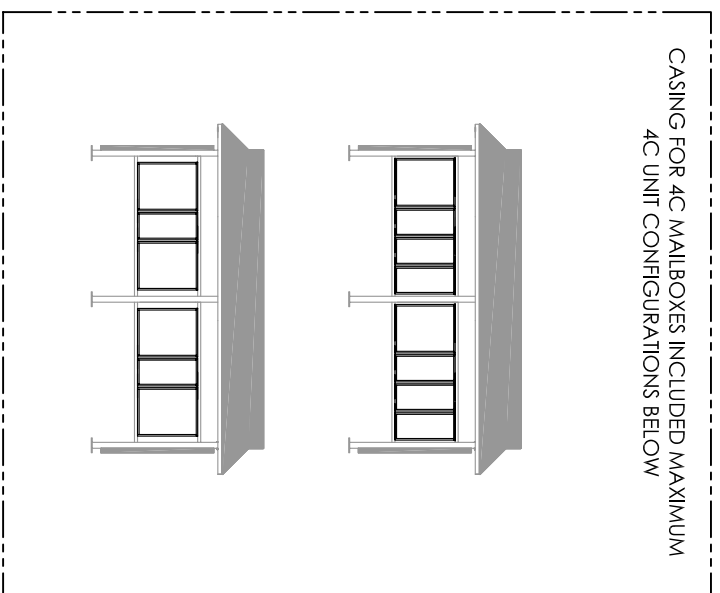


CASING FOR 4C MAILBOXES INCLUDED MAXIMUM
4C UNIT CONFIGURATIONS BELOW



- SHELTER FEATURES:
1. RATING: 90 MPH OR 150 MPH
 2. ROOF STYLE : PEAK OR SKYLIGHT
 3. FINISH: BLACK, DARK BRONZE, WHITE, FOREST GREEN, SILVER SPECK, POSTAL GREY OR SANDSTONE
 4. SIDE PANEL PLYWOOD INTERIOR COLOR: TAN, BLACK, GREY
 5. 4C MAILBOX SELECTION: REFER TO FLORENCE VERSATILE SUITE A, C, E, F, OR G
 6. SOLAR OR A/C POWERED LIGHT OPTION SOLD SEPARATELY
 7. FOR TECHNICAL FOUNDATION AND ROOF DETAILS REFER TO SPECIFIC MODEL SPECIFICATION DOCUMENTS

DESCRIPTION:
VARIO III 4C CONFIGURABLE MAIL SHELTER
END TO END



5935 CORPORATE DRIVE · MANHATTAN, KANSAS 66503

SIZE: **A** SHEET: **1 OF 1**

THIS DRAWING IS THE SOLE PROPERTY OF FLORENCE MANUFACTURING WHO CLAIMS PROPRIETARY RIGHTS IN THE MATERIAL DISCLOSED. IT IS ISSUED IN CONFIDENCE FOR ENGINEERING INFORMATION ONLY AND MAY NOT BE COPIED OR USED FOR INFORMATION OR MANUFACTURE OF ANYTHING SHOWN WITHOUT SPECIFIC PERMISSION FROM FLORENCE MANUFACTURING.

DRAWING NUMBER:
VAR3ESCS

COPYRIGHT FLORENCE CORP. 2007