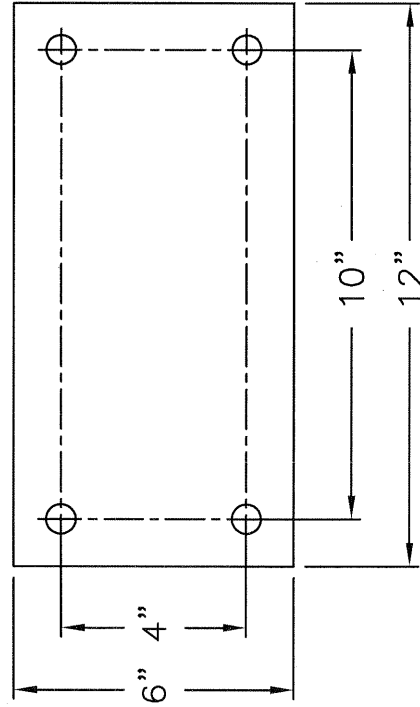
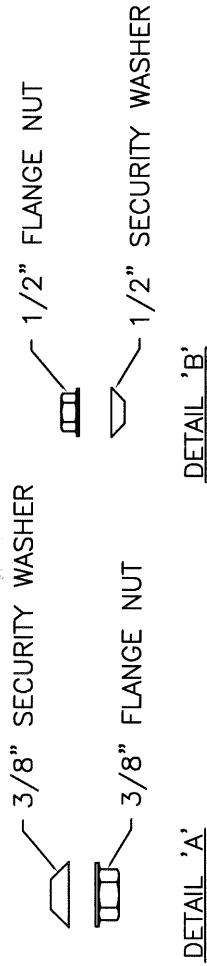


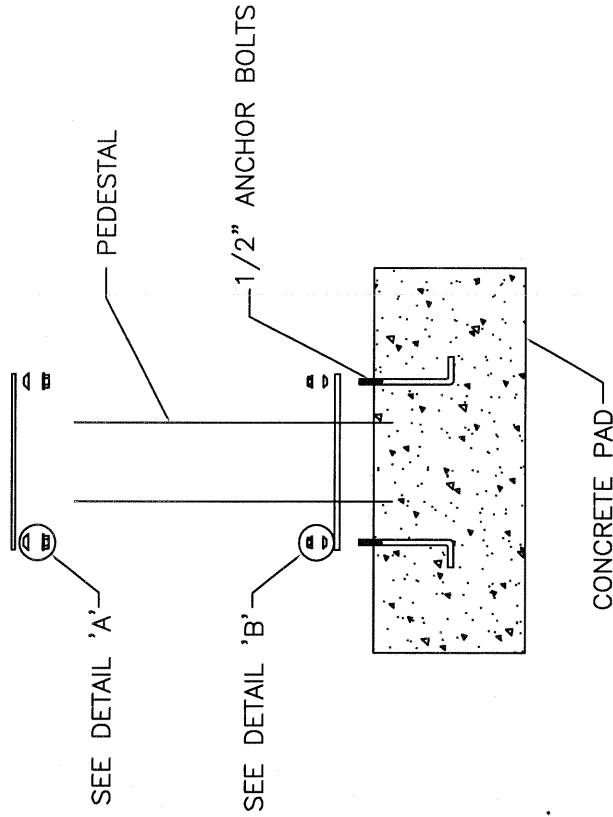
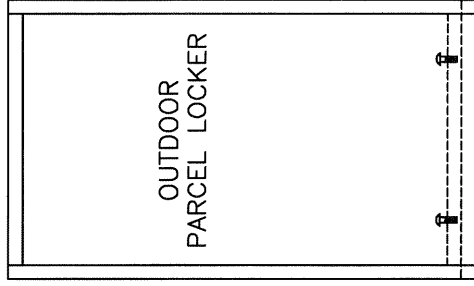
## INSTALLATION INSTRUCTIONS

### OUTDOOR PARCEL LOCKER - TYPE "B"

- STEP 1.  
Set (4) 1/2" dia. anchor bolts in cement slab at 4" x 10" centers as illustrated. Bolts should protrude at a minimum of 1" above slab. Allow cement slab to harden.
- STEP 2.  
Mount pedestal base over 1/2" dia. anchor bolts. Secure base to slab using (2) 1/2" security washers on diagonal corners and flange nuts as illustrated, making sure pedestal sets level (shim if necessary). Tighten flange nuts.
- STEP 3.  
Set Parcel locker on pedestal, lining up 3/8" dia. bolts protruding from bottom of nest plate. Secure nest plate to pedestal using (2) two 3/8" security washers on diagonal corners and 3/8" flange nuts as illustrated, making sure units set level (shim if necessary). Tighten flange nuts.



**NOTE:**  
Base Plate must be leveled in both directions. Use shims or washers, as needed. Then fill and seal space with grouting.



**AUTH AF FLORENCE**  
 MANUFACTURING COMPANY  
 5935 CORPORATE DRIVE  
 MANHATTAN KANSAS 66503